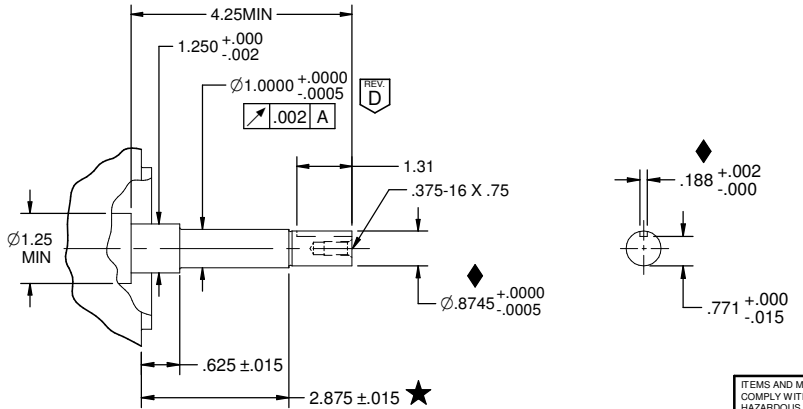
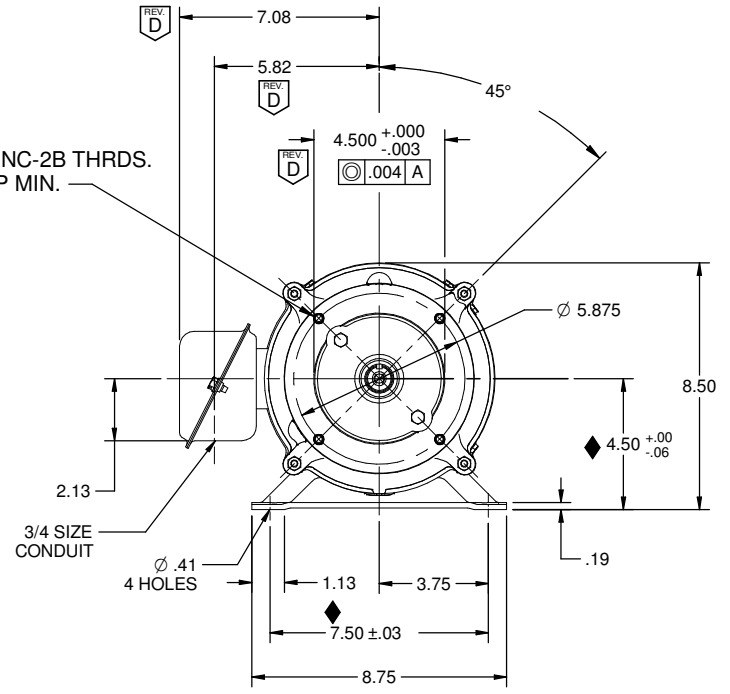


4 HOLES
 .375 - 16 UNC-2B THRDS.
 .625" DEEP MIN.



USEM M/N	CATALOG	HP	PHASE	FREQ	VOLTS	SPEED	FRAME	TYPE	INSUL. CLASS
DA96	EEQK500	5	3	60	208-230/460	3490-3515/3515	182JMZ	DE-4	F

CODE	NNE	FLA	PF	SF	TYP. SF EFF.	SF AMPS	PF @ SF
G/J/J	87.5-89.5/89.5	13.5-12.3/6.2	87.6-85.8/85.8	1.15	86.4-88.5/88.5	15.7-14.0/7.0	88.0-87.0/87.0

MIN. EFF.
85.5-87.5/87.5

NOTES	
①	MOTOR PAINTED WITH BLACK-SEMI GLOSS-43-2447.
②	303 STAINLESS STEEL SHAFT EXTENSION
③	BURNDY GKA4C GROUNDING LUG OR EQUIVALENT WITH LOCKWASHER BETWEEN LUG AND FOOT
④	GASKET BOTH SIDES OF SPACER.
⑤	GASKET BETWEEN OUTLET BOX COVER AND OUTLET BOX BASE.

NOTES: (UNLESS OTHERWISE SPECIFIED)

- 1. ★ - CUSTOMER CRITICAL DIMENSION.
- 2. ◆ - MAJOR DIMENSION.

ITEMS AND MATERIALS SPECIFIED HEREIN MUST COMPLY WITH THE EUROPEAN REDUCTION OF HAZARDOUS SUBSTANCES (REHS 2) DIRECTIVE 2011/65/EU, REGULATIONS (EC) NO. 1907/2006 ("REACH") AS OF 1 JUNE 2007 AND ALL SUBSEQUENT UPDATES. PLEASE REFER TO THE OFFICIAL EU DOCUMENTS FOR COMPLETE DEFINITION, RESTRICTIONS, AND LIMITS FOR EACH SUBSTANCE.

NIDEC CONFIDENTIAL
 NIDEC MOTOR CORPORATION 23-MAY-17

REVISION DESCRIPTION FOR: D3420-00 ADDED GTOL, MODIFIED DIM 5.82 WAS 5.63, 7.08 WAS 6.88 AND TABLE VALUES.	SCALE NONE	UNITS INCHES	TITLE DRAWING, DIMENSION	NIDEC MOTOR CORPORATION
TOLERANCES ON DIMENSIONS (UNLESS OTHERWISE SPECIFIED)	INCHES	mm	ISSUED BY I. GONZALEZ	
MATERIAL: ----	ANGLES X°= ±1°		APPROVED BY O. ORTEGA	REVISION DATE 22-JUN-18
			CODE DWG NO. 0645551	REV SHEET NUMBER D 1 OF 1