



PERFORMANCE CURVE		APPROVED SAMPLE		GEOMETRIC CHARACTERISTICS & SYMBOLS □ FLATNESS — STRAIGHTNESS ∠ ANGULARITY ⊥ PERPENDICULARITY (SQUARENESS) // PARALLELISM ○ ROUNDNESS (CIRCULARITY) ⌀ CYLINDRICITY △ PROFILE OF ANY SURFACE ∩ PROFILE OF ANY LINE ↗ RUNOUT ⊕ TRUE POSITION ◎ CONCENTRICITY ≡ SYMMETRY		UNLESS OTHERWISE SPECIFIED DIM. TOLERANCES ARE AS FOLLOWS: X XX XXX XXXX INCH ±.1 ±.02 ±.005 ±.0005 mm ±0.5 ±0.13 ±0.013 ANG. ±50 DEG REMOVE BURRS & BREAK SHARP EDGES: INCH .003-.015 mm 0.1-0.4 CORNER FILLETS TO: INCH .020 mm 0.5 MACHINE SURFACES: INCH 125 mm 32		DR BY: JLG		05-12-2009		 REGAL-BELOIT CORPORATION			
K48K2W1								APPD:						DESCRIPTION	
UL COMPONENT		CSA		THIRD ANGLE PROJECTION 		EDS DATE 11-11-2011 FORMAT REV G		CONFIDENTIAL: THIS DRAWING AND ITS INFORMATION ARE THE EXCLUSIVE AND CONFIDENTIAL PROPERTY OF REGAL-BELOIT CORPORATION AND ARE NOT TO BE DISCLOSED, DUPLICATED, DISTRIBUTED OR OTHERWISE USED WITHOUT THE WRITTEN CONSENT OF REGAL-BELOIT CORPORATION. -ALL RIGHTS RESERVED.		MODEL-PFHP-48FR OUTLINE		SIZE		DWG NO	
FILE#	CCN#	FILE#	GUIDE#									C	QC1072		
E25022	XEWR2	LR43341	4211-01							SCALE NONE				SHEET 1	
CUSTOMER		DISTRIBUTION SERVICES		ASME Y14.5M 1994		METRIC DIMS. SHOWN IN [BRACKETS]									

4

3

2

1

D

C

D

C

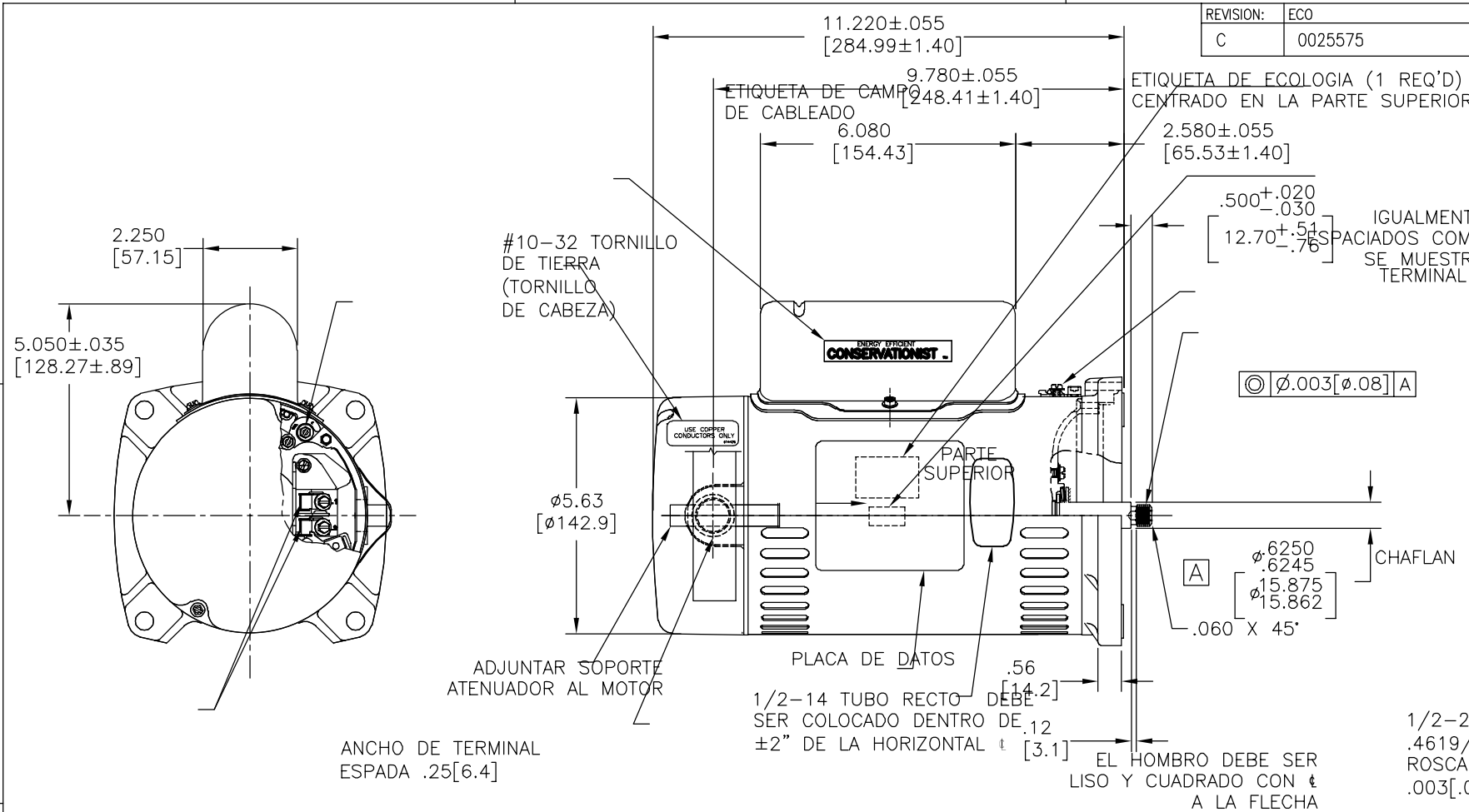
B

B

A

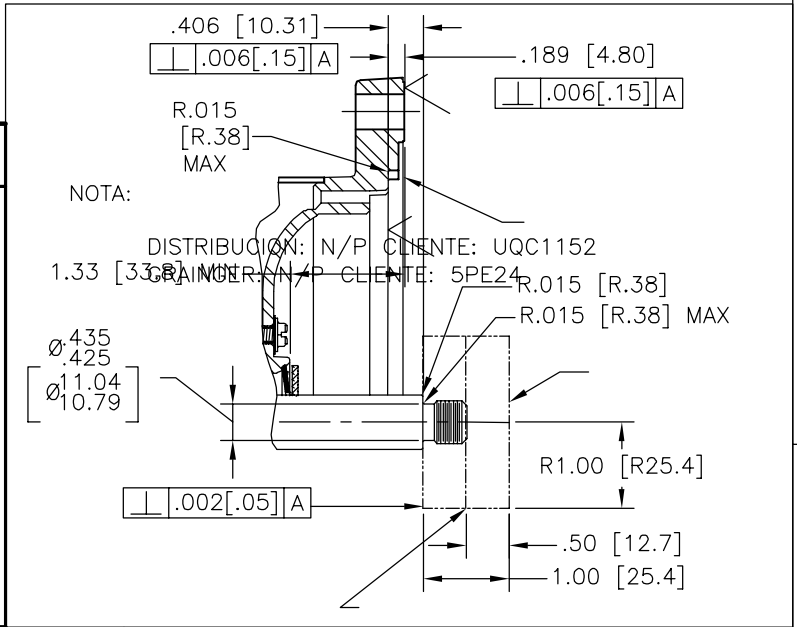
A

REVISION:	ECO	REVISADO POR:	FECHA:	APROBADO POR:	FECHA:
C	0025575	A. ARREOLA	05-01-2012	D. BALDERRAMA.	05-01-2012



VER NOTA PARA NO. PARTE DE CLIENTE

NAMEPLATE DATA	EXTERNAL CONNECTION DIAGRAM	NOTES
MODEL: K48K2PA101A1 CUST PN: QC1072 HP: 0.75 SF: 1.65 ROT: CCWPE RPM: 3450 TYPE: UAK CODE: L FORM: FRAME: 48Y VOLTS: 115/230 AMPS: MAX AMPS: 12.6/6.3 SF AMPS: - PH: 1 HZ: 60 INS: B AMB: 50°C DUTY: CONT ENCLOSURE: ODP THERMALLY PROTECTED	<p>GRD GREEN (GROUND) HIGH VOLTAGE SHOWN. ROTATE DIAL CCW TO 115 FOR LOW VOLTAGE. USE COPPER CONDUCTORS ONLY. INSTALL MOTOR WITH VENTS DOWN. ACCEPTABLE FOR FIELD WIRING</p>	1. EL ACABADO DE LA PINTURA SERA NEGRO SATINADO. 2. LLAVE PLANA DE 7/16 EN FLECHA - PARA ACCESO A ESTA LLAVE PLANA REMOVER CUBIERTA. 3. EXTENSION DE FLECHA DE ACERO INOXIDABLE. 4. MEDIDA DE LOS LIMITES DE AMPLITUD DE VIBRACION EN LA CAVIEDAD DEL BALERO=.001[.03]. 5. CUBIERTA DEL CAPACITOR SERA UBICADO ENTRE ±2.5' DE LA LINEA VERTICAL DE LA TAPA (LADO DE BOMBA). 6. ENSAMBLE DE REFERENCIA DEL MOTOR: 626610-007



PERFORMANCE CURVE	APPROVED SAMPLE	CARACTERISTICAS DE GEOMETRIA Y SIMBOLOS	A MENOS QUE SE ESPECIFIQUE DE OTRA MANERA, LAS TOLERANCIAS DE LAS DIMS: SON LAS SIGUIENTES:	DIBUJADO POR: JLG	05-12-2009	REGAL-BELOIT CORPORATION
K48K2W1		✓ PLANICIDAD - RECTITUD ∠ ANGULARIDAD ⊥ PERPENDICULARIDAD (A ESCUADRA) // PARALELISMO ○ REDONDEZ (CIRCULARIDAD) ∅ CILINDRICIDAD △ PERFIL DE CUALQUIER SUPERFICIE ▽ PERFIL DE CUALQUIER LINEA ↑ VARIACION ⊕ POSICION REAL ◎ CONCENTRICIDAD ≡ SIMETRIA	PULG ±.1 ±.02 ±.005 ±.0005 mm ±0.5 ±0.13 ±0.013 ANG. ±50 GRADOS ELIMINAR REBABAS Y ORILLAS FILOSAS DEL BORDE. PULG .003-.015 mm 0.1-0.4 FILETEAR ESQUINA: PULG .020 mm 0.5 MAQUINAR SUPERFICIES PULG 125 mm 3.2	TERCER ANGULO DE PROYECCION	FECHA EDS: 11-11-2011 REV. FORMATO: G	DESCRIPCION: MODEL-PFHP-48FR OUTLINE
UL COMPONENT	CSA					TAMAÑO: C NUMERO DE DIBUJO: QC1072
FILE#	CCN#	FILE#	GUIDE#			ESCALA: NONE HOJA: 1
E25022	XEWR2	LR43341	4211-01			
CUSTOMER	DISTRIBUTION SERVICES					

4

3

2

1

