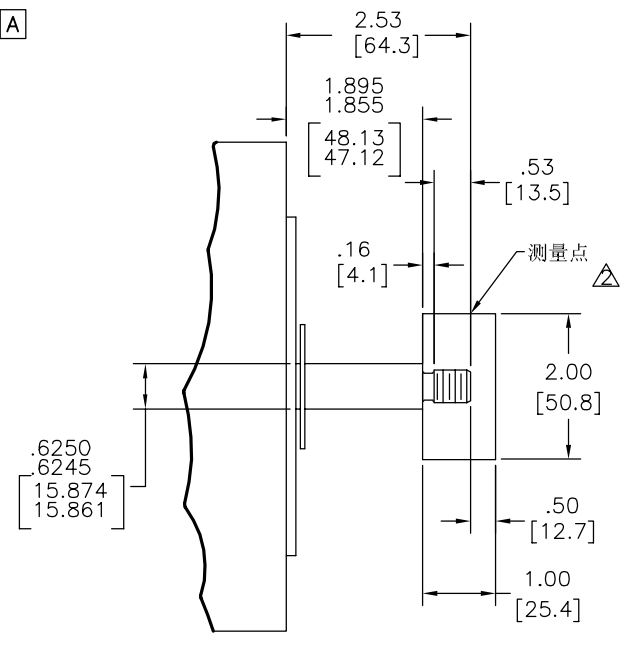
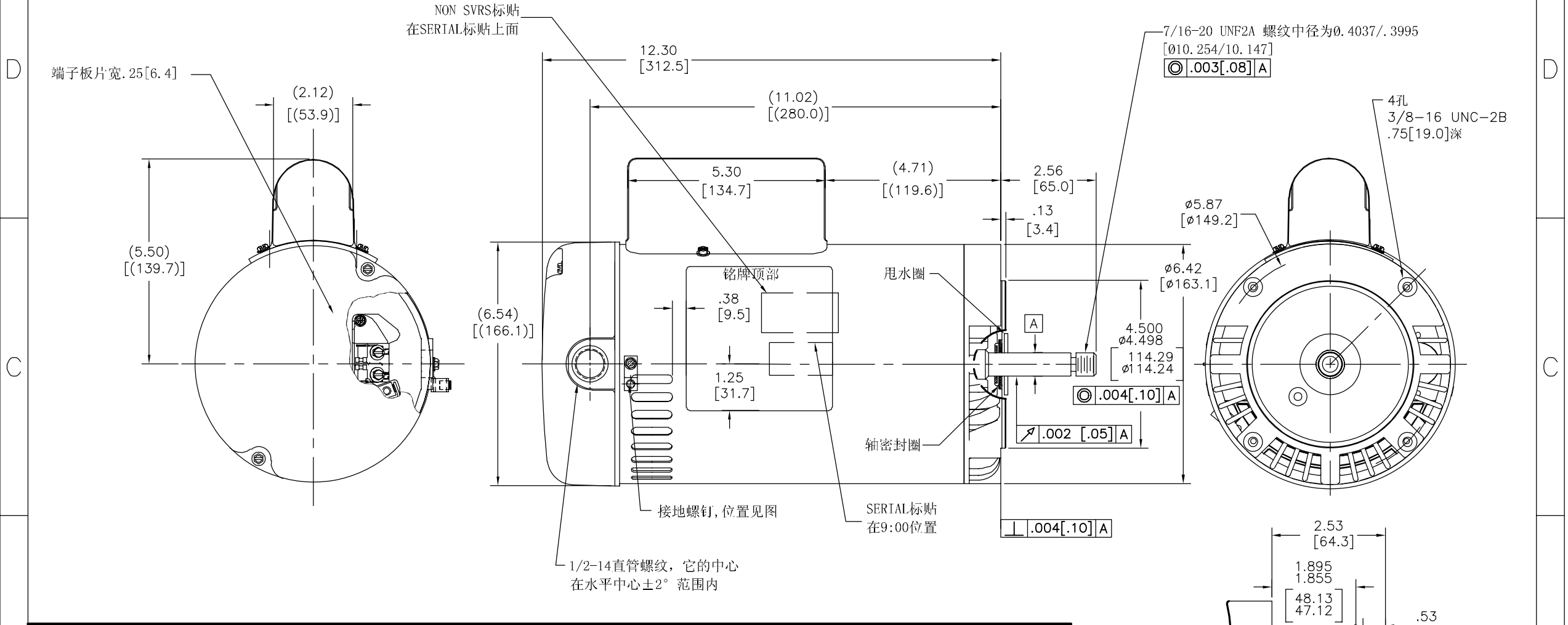


版本	ECO	编制	日期	批准	日期
J	ECO-0037.34	Y.LI	08-19-2013	B.SHEN	08-19-2013

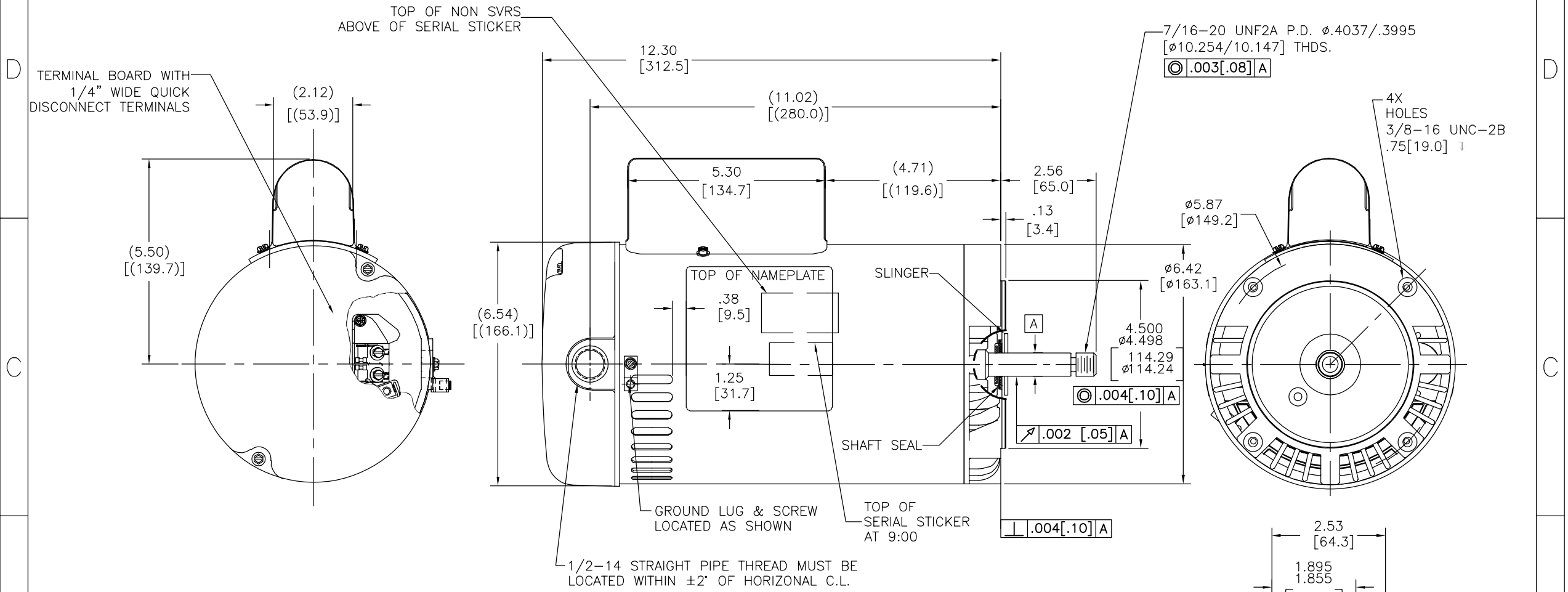


NAMEPLATE DATA	EXTERNAL CONNECTION DIAGRAM	NOTES
MODEL: 196385 CUST PN: ST1302V1 HP: 3.0 SF: 1.15 ROT: CCWPE RPM: 3450 TYPE: CP CODE: G FORM: FRAME: Y56J VOLTS: 208-230 AMPS: SF15.0-13.3 MAX AMPS: --- SF AMPS: --- PH: 1 HZ: 60 INS: B AMB: 50 DUTY: CONT ENCLOSURE: ODP THERMALLY PROTECTED		1. 轴向窜动不超过.010[.25] 2. 使用量规测量轴螺纹同心度(如图所示)与轴的同心度不超过.004[.10] 3. 螺纹端面应能旋紧至与轴肩齐平处。 4. 成品喷漆。 5. 不锈钢轴。 6. 移去后盖后,在轴板上可见.44[11.2]的扁身。

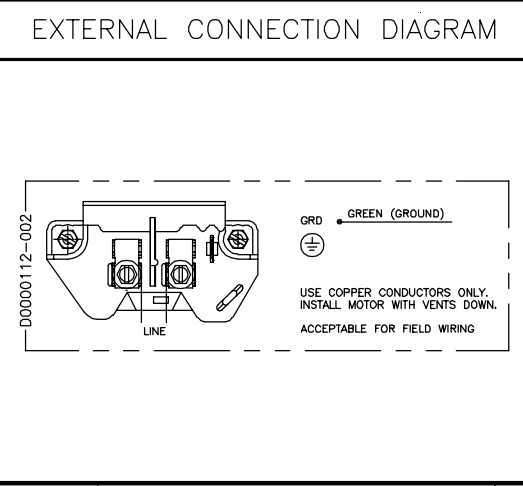
PERFORMANCE CURVE	APPROVED SAMPLE	形位公差 □ 平面度 ▭ 直线度 ∠ 倾斜度 ⊥ 垂直度 // 平行度 ○ 圆度 ⊙ 圆跳度 ⊖ 面轮廓度 ⊕ 线轮廓度 ⊕ 圆跳动 ⊕ 位置度 ⊕ 同轴度 ⊕ 对称度	除另有注明 尺寸公差如下: 英寸 X XX XXX XXXX 毫米 ±.1 ±.02 ±.005 ±.0005 毫米 ±0.5 ±0.13 ±0.013 角度 ±.50 度 清理毛刺和尖棱 英寸 .003-.015 毫米 0.1-0.4 内圆角 英寸 .020 毫米 0.5 表面粗糙度 英制 125 米制 3.2 米制尺寸显示在 [ ]	绘图: MEO	02-15-2008	<b>REGAL REGAL-BELOIT CORPORATION</b>  名称: ST1302V1 OUTLINE 图号: ST1302V1 比例: NONE 页号: 1	
101101011	0603286			批准:	第二角投影		图纸格式发布日期 11-11-2011 图纸格式版本 H
UL COMPONENT	CSA			机密: 本图纸及相关信息所有权归REGAL-BELOIT CORPORATION. 未经REGAL-BELOIT CORPORATION书面授权, 不得泄露、复制、传播或作其他用途。--版权所有			
FILE# CCN# FILE# GUIDE#							

CUSTOMER	DISTRIBUTION	ASME Y14.5M 1994	米制尺寸显示在 [ ]	比例	NONE	图号	ST1302V1	页号	1
----------	--------------	------------------	-------------	----	------	----	----------	----	---

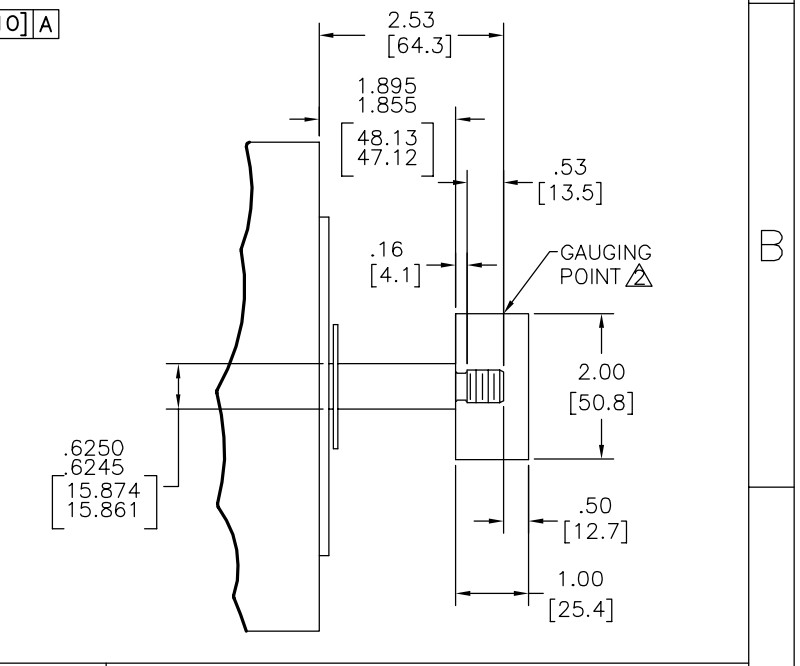
REV	ECO	REV BY	DATE	APPD	DATE
J	ECO-0037.34	Y.LI	08-19-2013	B.SHEN	08-19-2013



NAMEPLATE DATA	
MODEL: 196385	CUST PN: ST1302V1
HP: 3.0	SF: 1.15
ROT: CCWPE	
RPM: 3450	
TYPE: CP	CODE: G
FORM:	FRAME: Y56J
VOLTS: 208-230	
AMPS: SF15.0-13.3	
MAX AMPS: ---	
SF AMPS: ---	
PH: 1	HZ: 60
INS: B	AMB: 50
DUTY: CONT	
ENCLOSURE: ODP	
THERMALLY PROTECTED	



- NOTES
1. END PLAY NOT TO EXCEED .010 [.25] MEASURED WITH NO THRUST.
  2. △ FOR THREADED SHAFT EXT. ECCENTRICITY OF THREADED PORTION OF SHAFT IS HELD WITHIN .004 [.10] TOTAL GAGE READING WITH THE INDICATOR ON O.D. OF GROUND RING GAGE AS SHOWN. THE GAGE BEING STATIONARY WITH RESPECT TO THE ROTOR.
  3. FOR THREADED SHAFT EXT. MATING PARTS SHOULD BE RELIEVED ONE THREAD TO CLEAR FILLET.
  4. FINISH PAINT TO BE BLACK LACQUER
  5. STAINLES STEEL SHAFT
  6. .44 [11.2] WRENCH FLATS ON SHAFT -FOR ACCESS TO THIS WRENCH FLAT REMOVE END COVER.



PERFORMANCE CURVE	APPROVED SAMPLE
101101011	0603286
UL COMPONENT	CSA
FILE#	CCN#
E14663	XEWR2
FILE#	GUIDE#
LR4642	4211-01
CUSTOMER	DISTRIBUTION

GEOMETRIC CHARACTERISTICS & SYMBOLS	
∇	FLATNESS
-	STRAIGHTNESS
∠	ANGULARITY
⊥	PERPENDICULARITY (SQUARENESS)
//	PARALLELISM
○	ROUNDNESS (CIRCULARITY)
⊘	CYLINDRICITY
△	PROFILE OF ANY SURFACE
∩	PROFILE OF ANY LINE
∩	RUNOUT
⊕	TRUE POSITION
◎	CONCENTRICITY
≡	SYMMETRY

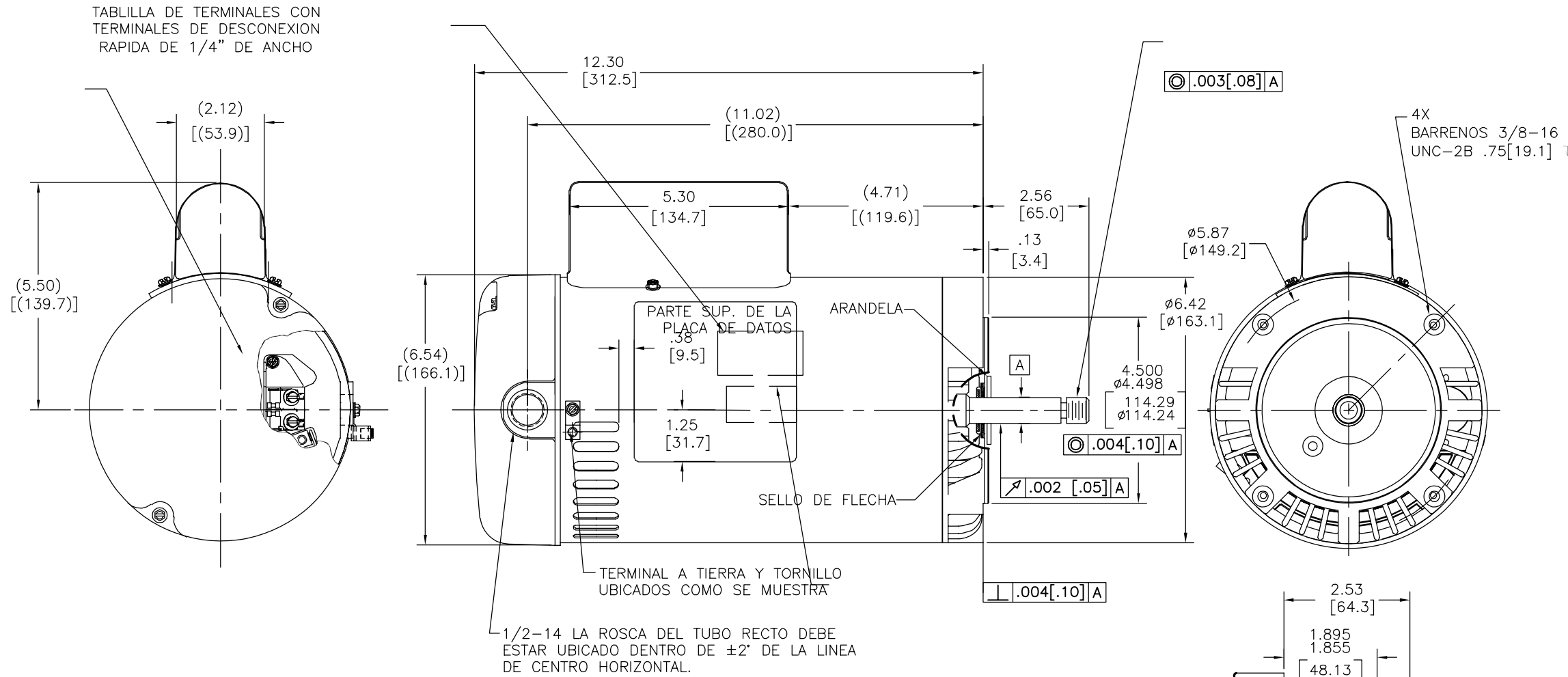
ASME Y14.5M 1994

UNLESS OTHERWISE SPECIFIED DIM. TOLERANCES ARE AS FOLLOWS:	
INCH	±.1 ±.02 ±.005 ±.0005
mm	±0.5 ±0.13 ±0.013
ANG.	±.50 DEG
REMOVE BURRS & BREAK SHARP EDGES:	
INCH	.003-.015
mm	0.1-0.4
CORNER FILLETS TO:	
INCH	.020
mm	0.5
MACHINE SURFACES:	
INCH	125
mm	3.2
METRIC DIMS. SHOWN IN [BRACKETS]	

DR BY:	MEO	02-15-2008
APPD:		
THIRD ANGLE PROJECTION	EDS DATE 11-11-2011	FORMAT REV H
CONFIDENTIAL: THIS DRAWING AND ITS INFORMATION ARE THE EXCLUSIVE AND CONFIDENTIAL PROPERTY OF REGAL-BELOIT CORPORATION AND ARE NOT TO BE DISCLOSED, DUPLICATED, DISTRIBUTED OR OTHERWISE USED WITHOUT THE WRITTEN CONSENT OF REGAL-BELOIT CORPORATION. -ALL RIGHTS RESERVED.		

<b>REGAL REGAL-BELOIT CORPORATION</b>	
DESCRIPTION	ST1302V1 OUTLINE
SIZE	C
DWG NO	ST1302V1
SCALE	NONE
SHEET	1

REVISION:	ECO	REVISADO POR:	FECHA:	APROBADO POR:	FECHA:
J	ECO-0037.34	Y.LI	08-19-2013	B.SHEN	08-19-2013



1/2-14 LA ROSCA DEL TUBO RECTO DEBE ESTAR UBICADO DENTRO DE ±2' DE LA LINEA DE CENTRO HORIZONTAL.

NAMEPLATE DATA	EXTERNAL CONNECTION DIAGRAM	NOTES
MODEL: 196385 CUST PN: ST1302V1 HP: 3.0 SF: 1.15 ROT: CCWPE RPM: 3450 TYPE: CP CODE: G FORM: FRAME: Y56J VOLTS: 208-230 AMPS: SF15.0-13.3 MAX AMPS: --- SF AMPS: --- PH: 1 HZ: 60 INS: B AMB: 50 DUTY: CONT ENCLOSURE: ODP THERMALLY PROTECTED	<p>USE COPPER CONDUCTORS ONLY. INSTALL MOTOR WITH VENTS DOWN. ACCEPTABLE FOR FIELD WIRING</p>	<ol style="list-style-type: none"> <li>JUEGO AXIAL NO DEBE EXCEDER .10[.25] MEDIDO SIN EMPUJE.</li> <li>PARA EXTENSION DE FLECHAS ROSCADAS LA EXCENTRICIDAD DE LA PORCION DEL ROSCADO DE LA FLECHA ESTA SOSTENIDA DENTRO DE .004[.10] LECTURA TOTAL DEL INDICADOR EN EL DIAM. EXT. DE ANILLO DE TIERRA COMO SE MUESTRA. EL INDICATOR EMPIEZA ESTACIONARIO CON RESPECTO A</li> <li>PARA EXTENSION DE FLECHAS ROSCADAS LAS PARTES COINCIDENTES DEBEN ESTAR A UN HILO DE LA ROSCA PARA DESPEJAR DEL FILO.</li> <li>ACABADO DE PINTURA DEBE SER DE NEGRO LACQUER.</li> <li>FLECHA DE ACERO INOXIDABLE.</li> <li>.44[11.2] LLAVE PLANA EN LA FLECHA- PARA EL ACCESO A ESTA LLAVE PLANA REMUEVA LA CUBIERTA.</li> </ol>

PERFORMANCE CURVE	APPROVED SAMPLE	CARACTERISTICAS DE GEOMETRIA Y SIMBOLOS Z PLANICIDAD - RECTITUD / ANGULARIDAD ⊥ PERPENDICULARIDAD (A ESCUADRA) // PARALELISMO ○ REDONDEZ (CIRCULARIDAD) ∅ CILINDRICIDAD △ PERFIL DE CUALQUIER SUPERFICIE ∩ PERFIL DE CUALQUIER LINEA ∠ VARIACION ⊕ POSICION REAL ⊙ CONCENTRICIDAD = SIMETRIA	A MENOS QUE SE ESPECIFIQUE DE OTRA MANERA, LAS TOLERANCIAS DE LAS DIMS; SON LAS SIGUIENTES: PULG ±.1 ±.02 ±.005 ±.0005 mm ±0.5 ±0.13 ±0.013 ANG. ±.50 GRADOS ELIMINAR REBABAS Y ORILLAS FILOSAS DEL BORDE. PULG .003-.015 mm 0.1-0.4 FILETEAR ESQUINA: PULG .020 mm 0.5 MAQUINAR SUPERFICIES PULG 125 mm 3.2	DIBUJADO POR: MEO	02-15-2008	<b>REGAL</b> REGAL-BELOIT CORPORATION DESCRIPCION: ST1302V1 OUTLINE TAMAÑO: C NUMERO DE DIBUJO: ST1302V1 ESCALA: NONE HOJA: 1
101101011	0603286			TERCER ANGULO DE PROYECCION CONFIDENCIAL: ESTE DIBUJO Y SU INFORMACION SON PROPIEDAD DE USO EXCLUSIVO Y CONFIDENCIAL DE REGAL-BELOIT CORPORATION. Y NO DEBERAN SER REVELADOS, DUPLICADOS, DISTRIBUIDOS O USARSE DE OTRA MANERA SIN EL CONSENTIMIENTO ESCRITO DE REGAL-BELOIT CORPORATION. -TODOS LOS DERECHOS RESERVADOS.	FECHA EDS: 11-11-2011 REV. FORMATO: H	