



# MULTI-PORT VALVE USER MANUAL

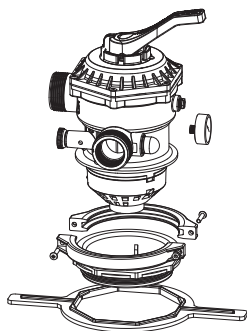
For CMP# 27500-154-000; 27501-154-000; 27502-154-000



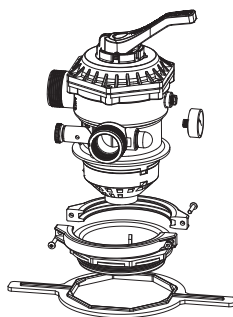
**Important Notice:** This manual contains important information about the installation, operation and safety procedures of the product. Read and follow all instructions before the installation or servicing. Failure to follow safety warnings and instructions can result in severe injury, death, or property damage.

## PRODUCT INFORMATION

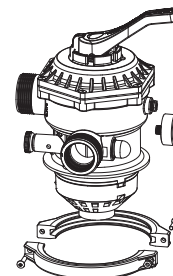
These multi-port valves are for direct replacements of Pentair 262504; 262505 or 262506 Valves\* and they are top mount to Pentair Tagelus and Tagelus D sand filters, such as TA 40D, TA 50D, TA 60D and TA 100D. The filter valve features an easy-to-use lever action handle that lets you dial up to seven valve/filter functions: filter, backwash, waste, rinse, closed, winterize or recirculate. The valve has 1-1/2in FPT and 2in Buttress port connections. Please choose the correct model to suit the clamping style that you need.



27500-154-000  
Includes: Filter Valve, Clamp,  
6in Buttress Thread Adapter  
& Wrench



27501-154-000  
Includes: Filter Valve, Clamp,  
6in "V" Thread Adapter  
& Wrench



27502-154-000  
Includes: Filter Valve & Clamp,

\*Pentair is a registered trademark of Pentair Aquatic Systems

### Valve Setting

### Water Flow Path; Setting Function

<b>FILTER</b>	<i>PUMP ► TOP ► THROUGH FILTER ► BOTTOM ► POOL RETURN</i> For normal filter action and vacuuming pool through filter.
<b>BACKWASH</b>	<i>PUMP ► BOTTOM ► THROUGH FILTER ► TOP ► WASTE</i> For cleaning filter by reversing flow.
<b>RINSE</b>	<i>PUMP ► TOP ► THROUGH FILTER ► BOTTOM ► WASTE</i> For start-up cleaning and resetting filter bed after backwashing.
<b>WASTE</b>	<i>PUMP ► WASTE</i> For vacuuming directly to waste, lowering pool level or draining pool.
<b>CLOSED</b>	<i>NO FLOW. DO NOT USE WHEN PUMP IS IN OPERATION</i> For shutting off all flow to filter and pool.
<b>RECIRCULATE</b>	<i>PUMP ► POOL RETURN</i> For circulating water without going through filter.
<b>WINTER</b>	<i>DRAIN WATER FROM VALVE</i> For winterizing.



**CAUTION: TURN PUMP OFF BEFORE SERVICING OR CHANGING VALVE POSITIONS**

# INSTALLATION & SERVICE INSTRUCTIONS



- Confirm correct valve is being used for your filter type and model.
- To install valve to filter, connect the adapter to filter and clamp valve on top of adapter or clamp valve directly to filter depends on your filter's clamping style. Connect pump, return, and waste lines by following the markings of the ports. Use Teflon pipe tape for connect pipe fittings. **DO NOT OVER TIGHTEN PIPE FITTINGS.**
- **Always open air bleeder to relieve internal pressure before attempting to service your valve.** To open top half and service valve, evenly and alternately loosen cover screws. **VALVE TOP IS UNDER SPRING LOAD.**
- To re-assemble the top half, ensure bottom gasket and diverter sealing surface are clean. Place diverter on a smooth and firm surface. Assemble parts on shaft by following Figure A. **Make sure the pointer on handle and the arrow on diverter point to same direction.** Press down on the cover using clamps to depress the heavy-duty spring and secure the valve handle with the screw.
- To re-assemble the top half to valve bottom, tighten cover screws evenly and alternately. **DO NOT OVER-TIGHTEN THE SCREWS, OR USE MOTORIZED SCREWDRIVERS.**
- **WINTERIZATION:** To winterize, drain the pump and filter per manufacturer's instructions. Press down on the valve handle and rotate to the WINTERIZE position.



IF O-RINGS REQUIRE LUBRICATION, USE ONLY SILICONE TYPE LUBRICANTS

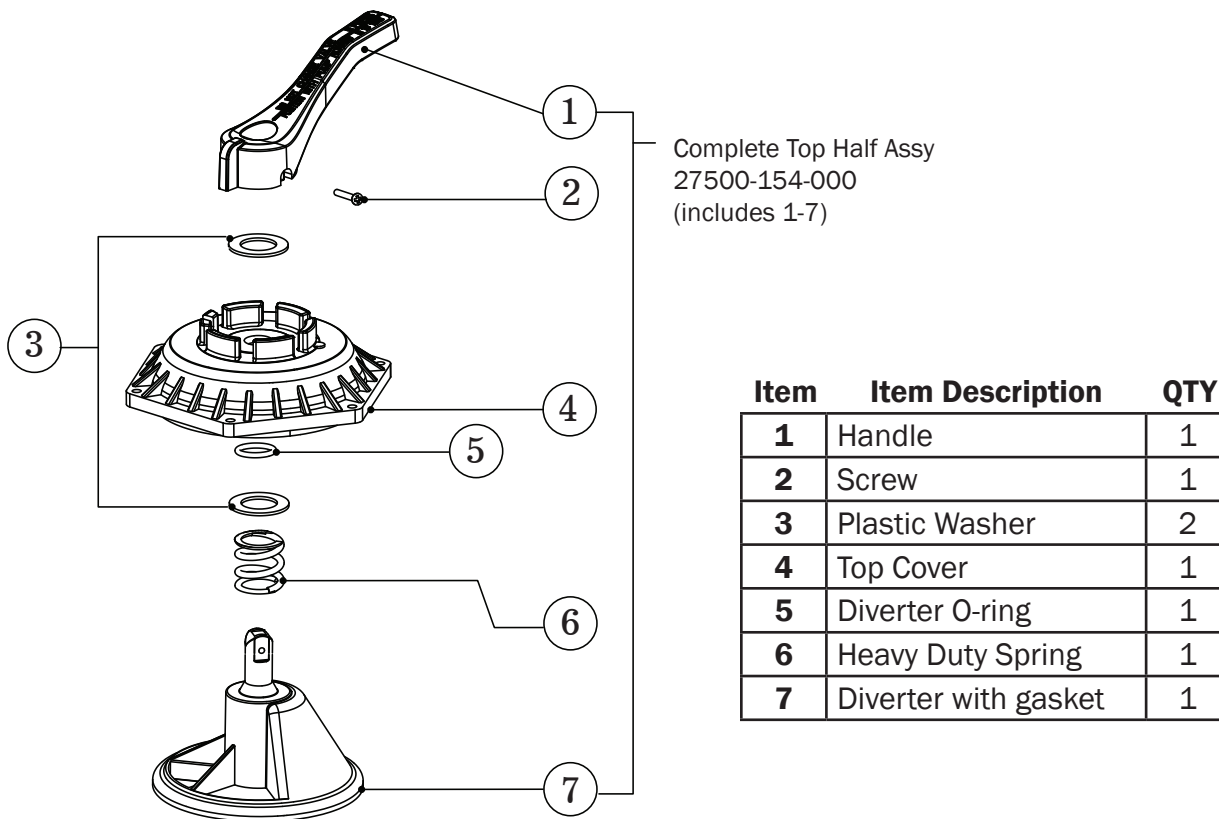


Figure A: Top Half Assy Components

For the full list of replacement parts of this unit, please check our catalog or our website at [www.c-m-p.com](http://www.c-m-p.com).